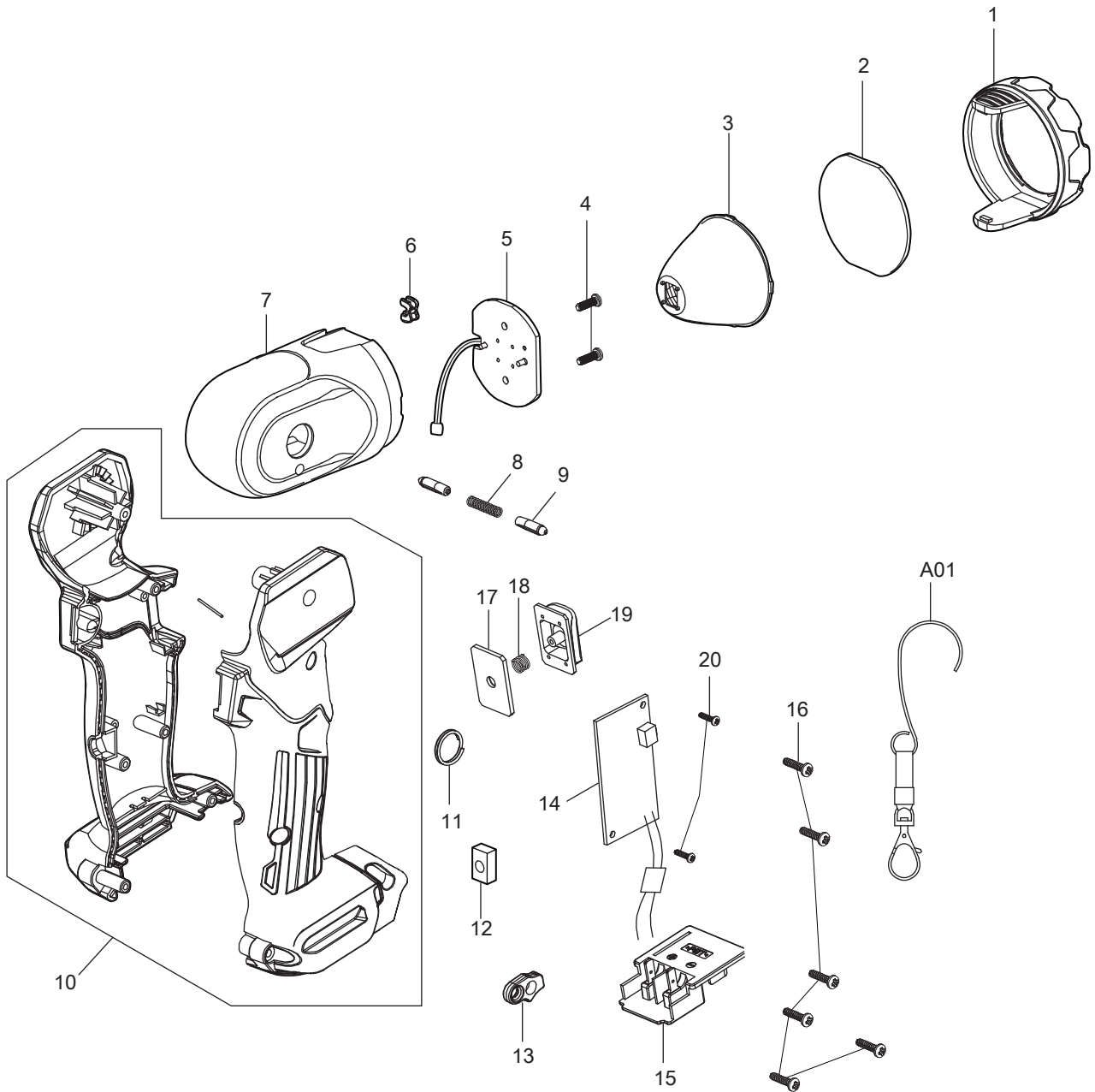




03 - 2017
ML105
12V Max LED Flashlight



Item Type	Part No	Description	Qty	Unit
001	GM00001299	BEZEL	1	PC.
002	GM00001298	LENS	1	PC.
003	GM00001297	REFLECTOR	1	PC.
004	GM00001296	PH SCREW M3X8	2	PC.
005	GM00001700	LED PRINTED CIRCUIT BOARD A ASSEMBLY	1	PC.
006	GM00001701	WIRE HOLDER	2	PC.
007	GM00001702	ALUMINUM HEAD SET	1	PC.
008	GM00001703	KNOCK SHAFT SPRING	1	PC.
009	GM00001704	KNOCK SHAFT	2	PC.
010	GM00001705	HOUSING SET	1	SET
011	SM00000190	RING	1	PC.
012	GM00001687	SQUARE NUT	1	PC.
013	GM00001706	METAL HOOK PLATE	1	PC.
014	GM00001707	MAIN PRINTED CIRCUIT BOARD A ASSEMBLY	1	PC.
015	GM00001708	BATTERY TERMINAL	1	PC.
016	GM00001024	SCREW 3X12	6	PC.
017	GM00001709	SPRING HOLDER WITH SPRING WASHER	1	PC.
018	GM00001710	SWITCH SPRING	1	PC.
019	GM00001711	SWITCH COVER	1	PC.
020	GM00001395	PAN HEAD SCREW M2.6X8 TYPE B	2	PC.
<u>ACCESSORIES</u>				
- See Catalogue or visit www.makita.ca for more accessories -				
A01	GM00001289	HOOK BAND SET	1	PC.
A02	GM00001714	MAGNET	1	PC.
A03	-----	12V MAX LI-ION BATTERY, SLIDE TYPE		
A04	DC10SB	RAPID CHARGER DC10SB	1	PC.