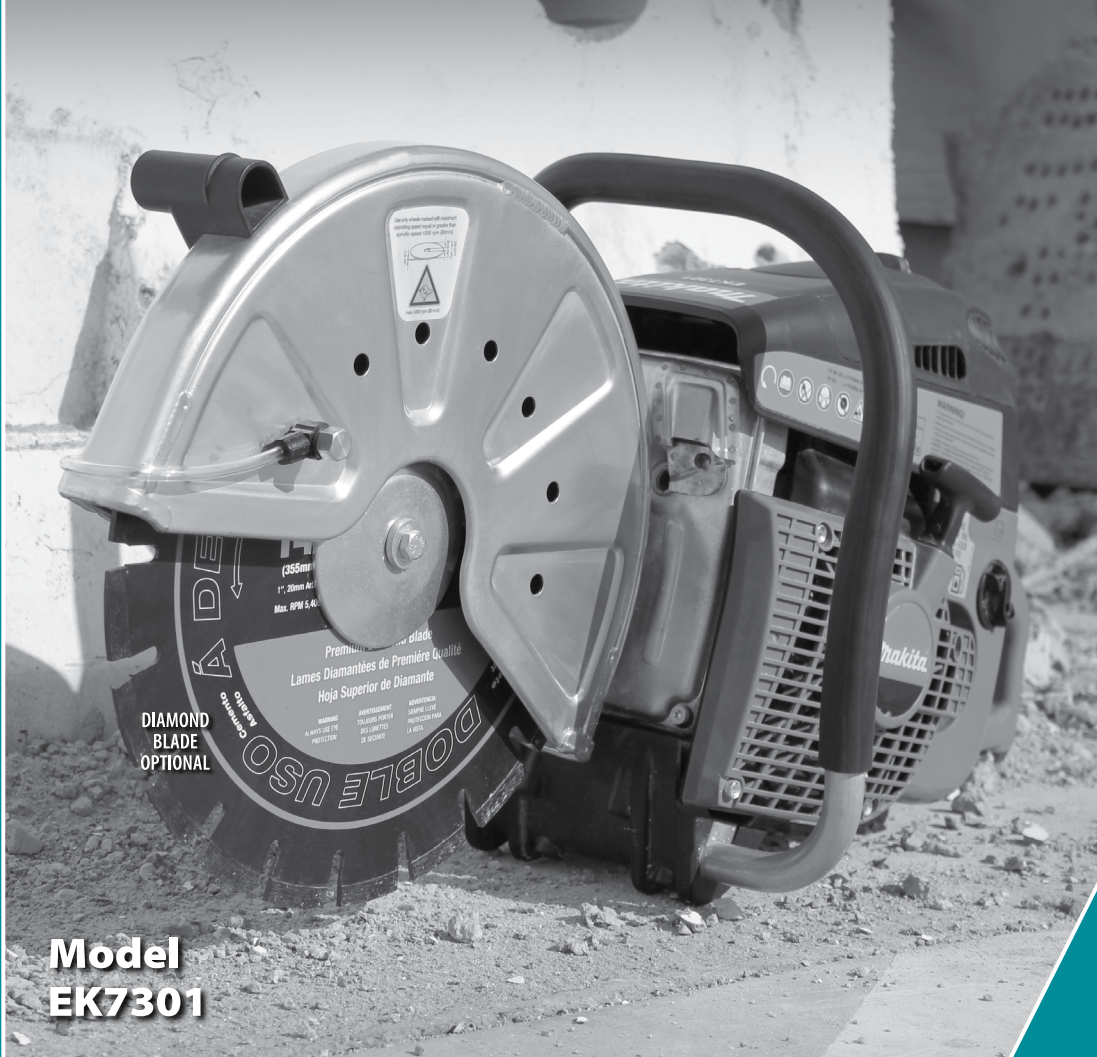




14" 73 cc. INDUSTRIAL POWER CUTTER

FIVE STAGE FILTRATION SYSTEM WITH ADVANCED DIRECTIONAL AIR FLOW PROVIDES VERY CLEAN AIR FOR BETTER SAW PERFORMANCE

- Carburetor Engineered with Improved Deco-Valve and Metering Spring for Precise Fuel Regulation at Start Up
- Improved Ignition System with Large Flywheel and Rare Earth Magnets Create More Efficient Power
- Reinforced Aluminum Blade Guard with 70 Degrees Range of Limitless Positioning using a Marked Knob Handle
- Starter Grip Decompression Valve for Faster Starting



**Model
EK7301**

DIAMOND
BLADE
OPTIONAL

PERFORMANCE



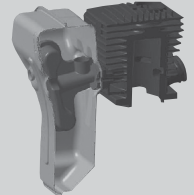
Five-stage filter system w/ advanced directional air flow ensures clean air for added performance & long engine life

POWER



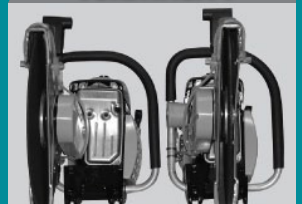
Ignition coil with start-support function stores electrical energy each pull for easier start ups

EFFICIENCY



SLR muffler recycles unburned fuel vapor, reducing scavenging-losses up to 15% improved consumption

VERSATILITY



Change blade from central to outbound flush position for lateral cuts in less than 2 minutes

INCREASED PERFORMANCE

14" 73 cc. INDUSTRIAL POWER CUTTER

Model EK7301

FEATURES & BENEFITS

- Five-stage, foam-paper-nylon system with advance directional air flow provides cleaner air for better saw performance
- Improved ignition system with larger flywheel and rare earth magnets create more efficient power
- Cutting arm position changes simply from center position to flush (outboard) position allowing cuts directly adjacent to curb edges, wall or directly above the ground
- On-Off-Choke operation switch on a single lever for operator convenience
- Cushioned operator grips with 4 vibration-absorption rubber buffers for increased operator comfort
- Microchip-controlled carburetor designed to compensate engine timing according to work load
- Aluminum guard and wheel pressure plates to reduce weight
- Starter grip decompression valve for faster starting
- Water kit is assembled to saw and can be used with garden hose, gravity tank or pressure tank
- 2-mass dampening system provide reduced vibration to operator



Model EK7301

2
YEAR

WARRANTY

STANDARD EQUIPMENT

- 14" Cutting Disk For Stone 20mm (966 141 120), Tool Kit (957 004 006), Water Attachment Kit (394 365 630), Starter Rope (394 164 020), Spark Plug (965 603 021)

SPECIFICATIONS

Displacement	4.5 cu.in (73 cc)
Max. Power	3.8 kW (5.1 H.P)
Fuel / Oil Mixture	50:1
Fuel Tank Capacity	1/3 Gal (1.1 L)
No Load Speed (Engine)	9,400 RPM
Max. Spindle Speed	4,300 RPM
Arbor	20 mm
Max. Cutting Depth	4-13/16" (122 mm)
Dry Weight	22.5 lbs (10.2 kg)

WARRANTY

- All Makita gas powered outdoor power equipment (OPE) is warranted to be free of defects from workmanship and materials for a period of TWO YEARS from the date of original purchase. This warranty includes Makita gas powered OPE products used in consumer, commercial or rental applications. Any accessories included with OPE products have a ONE YEAR warranty. These accessories include but are not limited to chainsaw chains, chainsaw bars, trimmer heads, brush cutter blades, handles, harnesses, hoses, connectors, filters, bags, tool kits, and adjustment/maintenance tools.

OUTDOOR
POWER EQUIPMENT

Makita[®]

When SERVICE Counts - Choose Makita