



Cordless Drywall Cutter DSD180Z



Suitable for straight cut
in overhead application,
such as setting lights, air vents etc.



Connectable to vacuum cleaners

Cordless Backpack Vacuum Cleaner (DVC260) is option

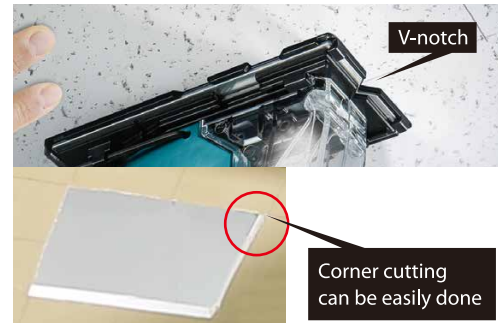
Tool Only
(Battery Sold Separately)



Base cover

protects drywall surfaces from damage/ scratches and keeps the machine balance during cutting.

V-notch in base plate helps easy tracing of cutting line.



Variable speed control by trigger allows easier start of cutting.

Battery fuel gauge

Dust box

catches dust that drops through the base of base cover.

Dust connector assembly

connectable to vacuum cleaner.

LED job light

brightly illuminates the cut line for easy cutting of workpiece in the dark place.



Cutting depth adjustment

Drywall



- Cutting depth can be adjusted to drywall thickness.
- Prevent accidental breakage of wires

Blades



For dry wall
Part No. B-49703

For wood
Part No. B-49719

Option
(Snap-off blade)

Compatible with both special blades for this drywall saw and option snap-off blades.

Blade cover

protects drywall surfaces from damage/ scratches.



Power by 18V Li-ion battery

with Battery fuel gauge

BL1860B: 6.0Ah
BL1850B: 5.0Ah
BL1840B: 4.0Ah
BL1830B: 3.0Ah



BL1850B

BL1815N*: 1.5Ah

*without Battery fuel gauge



BL1815N

Rapid Charger

DC18RC



Standard Charger

DC18SD



Cordless Drywall Cutter

DSD180Z

- Variable Speed
- Orbital Cutting
- Dust Collecting
- Built-in Job Light
- Carrying Case

Battery Capacities 18V Li-Ion
Maximum Cutting Capacities: Drywall: 1-3/16" (30 mm)
Wood: 9/16" (15 mm)
Strokes Per Minute 0 - 6,000 SPM
Length of Stroke 1/4" (6 mm)
Overall Length 10-3/8" (263 mm)
Net Weight 2.9 lbs (1.3 kg)

Standard Equipment: Tool Only. Battery and Charger Sold Separately. Base cover (456624-4), Blade Cover (456632-5), Blade (723099-5), Hex Wrench (783201-2)

When QUALITY & SERVICE COUNTS – Choose Makita

makita.ca