



Cordless Portable Band Saw DPB182



Durable Aluminum Frame

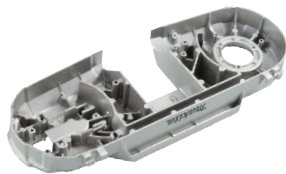


Cutting capacity
up to \varnothing 64 mm
(2-1/2")



Stable cutting with highly rigid aluminum structure

Aluminum frame



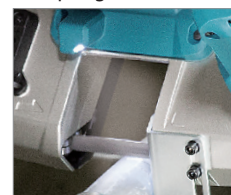
Frame improves rigidity and prevents blade from coming off.

Prevents blade slipping on wheel by raising tension force.

Hook (option) for hanging on the guard rail of suspended or supported scaffolds



Single LED job light with pre-glow function



Wheel cover set (option)



Easy blade replacement

by quick blade tension lever



Adjustable stopper plate

convenient to cut pipes near wall, floor and ceiling.

Easy blade track adjustment simply by turning the screw



Work amount

(on a single full battery charge, battery: BL1850B)

Carbon steel pipe
3.7 mm to 5/32"

35 pcs.

1/2" Threaded Rod

250 pcs.

Accessories

Bi-Metal Band saw blade

(5pcs./ set) Wave teeth

Width : 1/2"

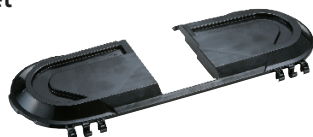
Thickness : 0.020"

Length : 32-7/8"



No. of teeth inch	Thickness of work piece	Application	Part No.
14	1/8" - 1/4"	Plastics and non-ferrous metal.	B-40543
18	5/64" - 1/8"	Mild steel, cast steel and cast iron.	B-40559
24	Less than 5/64" - 1/8"		B-40565

Wheel cover set



Part No. 197975-3



Hook



Part No. 345736-7

Cordless Portable Band Saw

DPB182

Battery Capacities:	18V Li-Ion
Maximum Capacities:	Round Work Piece Diameter: 2-1/2" (64 mm)
	Square Work Piece: 2-1/2" x 2-1/2" (64 mm x 64 mm)
Blade Speed	630 ft. / min. (3.2 m / sec.)
Overall Length	18-3/4" (477 mm)

Standard Equipment :

Tool Only. Battery and Charger Sold Separately.
Bi-Metal Band Saw Blade 18 TPI (1 Ea. B-40559),
Hex Wrench 4 (783202-0), Hook (345736-7)

Built-in Job Light

When QUALITY & SERVICE COUNTS – Choose Makita

makita.ca