

BRUSHLESS
X2
18V + 18V → 36V

Depth gauge

can be adjusted for desired drilling depth simply by pushing single push button

Twin LED job light



Dust collection inlet

can be adjusted according to bit length simply by pushing single push button

Large dust box cover

can be opened simply by pushing single push button for easy dust cleaning.



Filter cleaning mechanism

Accessories

Dust extraction system set

DX08
for
DHR280,
DHR282



Dust case

Part No.
199555-1



HEPA Filter



High Efficiency Particulate Air filter is widely regarded as ultimate filter that traps all sizes of particles with an efficiency rating of 99.75%.

Part No.
199557-7



Dust cup



DHR280, DHR282
Part No. 195173-3

DHR281, DHR283
Part No. 195179-1



Photo : DHR280 & DX08

Transparent dust case

for easy checking of collected dust amount



Cordless 1-1/8" Rotary Hammers

DHR280 / DHR282

- Variable Speed
- Built-in Job Light
- Brake
- Reversing
- SDS-PLUS Shank
- Torque Limiter
- Constant Speed

	DHR280	DHR282
Battery Capacities	Two 18V Li-Ion	Two 18V Li-Ion
Capacities:	Concrete (TCT): 1-1/8" (28 mm)	Concrete (TCT): 1-1/8" (28 mm)
	Concrete (Core Bit): 2-1/8" (54 mm)	Concrete (Core Bit): 2-1/8" (54 mm)
	Concrete (Diamond Core Bit): 2-9/16" (65 mm)	Concrete (Diamond Core Bit): 2-9/16" (65 mm)
	Steel: 1/2" (13 mm)	Steel: 1/2" (13 mm)
	Wood: 1-1/4" (32 mm)	Wood: 1-1/4" (32 mm)
Impact Energy	2.8 J (2.1 ft. lbs)	2.8 J (2.1 ft. lbs)
No Load Speed	0 - 980 RPM	0 - 980 RPM
Blows Per Minute	0 - 5,000 BPM	0 - 5,000 BPM
Overall Length	14-3/4" (373 mm)	14-3/4" (373 mm)

DHR280 Standard Equipment: Cleaning Cloth (443122-7), Bit Grease (194683-7), Depth Gauge (331886-4)
DHR282 Standard Equipment: Cleaning Cloth (443122-7), Bit Grease (194683-7), Depth Gauge (331886-4)

When **QUALITY & SERVICE COUNTS** – Choose Makita
makita.ca

Satisfy Professional's Needs



Adapted for SDS-PLUS bits



18Vx2 Cordless SDS-PLUS
1-1/8" Rotary Hammers
DHR280 / DHR282 **AWS**

High Speed Drilling and Great Work Volume



HEPA filter

with filter cleaning mechanism

Photo : DHR280 & DX08
Tool does not come with Bit.



DX08 ▶

BRUSHLESS
X2
18V + 18V → 36V



DHR282 Only

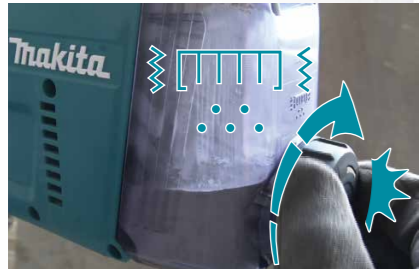
Excellent Power and Low Vibration

1-1/8"
Cordless Rotary Hammer

Max Bit length :
10-1/4"

HEPA
filter

Filter cleaning mechanism
by turning the dial, the dust falls off from the filter



BL MOTOR Brushless Motor

Work Speed

About **40%UP**
Predessor Model

Work Volume

About **65%UP**
Predessor Model

Concrete with compressive strength of 40N/mm²
Diameter : Ø12.5mm(1/2"), depth of 60mm(2-3/8")



Twin LED job light

Speed dial

Drilling
Work Amount

Diameter : Ø12.5mm(1/2")

About

140 pcs.

(Battery : BL1850B x2)



Photo : DHR280 & DX08

BRUSHLESS
X2
18V + 18V → 36V

XPT

AVT Anti Vibration
Technology

Less Vibration

Vibration level

[Chiselling] 8.0m/s² /
[Drilling (into metal)] 2.5m/s²

[Hammer drilling]
(into concrete)
9.0 m/s²

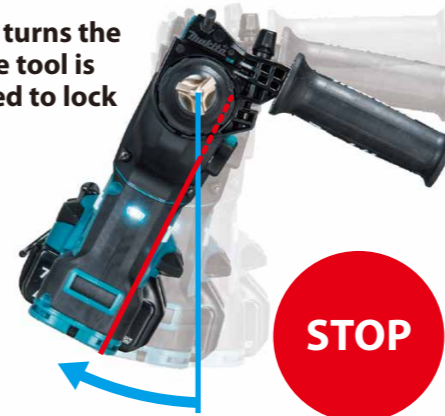
Anti-vibration grip Counterweight Vibration absorbing handle



AFT Active Feedback
sensing Technology

DHR282 only

Torque limiter turns the
motor off if the tool is
suddenly forced to lock



AWS

Auto - start Wireless System DHR282 only



Switch on the
tool



Vacuum cleaner
is activated

Bluetooth®

Accessories

Wireless Unit

198901-5, 198900-7(EU),
199393-1(Asia)



Features and benefits

	DHR280	DHR282
AFT		✓
AWS		✓
AVT	✓	✓
Dust extraction system set	DX08	DX08