



Satisfy Professional's Needs

## 1/3 Sheet Finishing Sander BO3710

# Smooth Sanding

with lower center of gravity



**Dust Box  
Sold Separately**

# Ergonomically best possible gripping



fits user's hand perfectly, providing sure grip and easy handling whether in single- or double-handed operation.



## Compact and lightweight design for easy handling and high maneuverability



**Sturdy cylindrical Motor Housing**

**Rubberized soft grip** provides more comfort and better control while minimizing hand fatigue and pain.

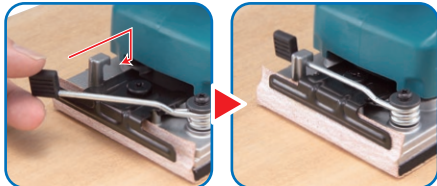


**Dust Box Sold Separately**

Photo: BO3711

### Easy-to-operate paper clamp

ensures easy installation/removal of paper with rolled clamber's edges.



### Rigid aluminum foot with sponge sleeve

provides high durability and effective vibration-absorbing performance.



### High dust extraction



Also connectable to vacuum cleaners with hose



### Accessories

**Punch plate**  
(For allowing dust extraction through the base)  
Metal: Part No. 192945-7  
Plastic: Part No. 451271-6



**Pad complete**  
For use with Abrasive paper  
Part No. 140441-9  
(four ellipse hole)



**Dust box assembly**  
Part No. 135246-0



use with Filter set  
Part No.195133-5  
(w/o mark of origin)

**Dust bag assembly**  
Part No. 140115-2



**Hose** Inner dia.28mm  
Including front cuff 22  
Part No. A-34235



## 1/3 Sheet Finishing Sander

## BO3710

64

- Double Insulation
- Dust Collecting



|                            |                                  |
|----------------------------|----------------------------------|
| <b>Pad Size</b>            | 3-5/8" x 7-1/4" (93 mm x 185 mm) |
| <b>Abrasive Paper Size</b> | 3-5/8" x 9" (93 mm x 228 mm)     |
| <b>Orbits Per Minute</b>   | 11,000 OPM                       |
| <b>AMPS (120V)</b>         | 1.7 A                            |
| <b>Overall Length</b>      | 10" (253 mm)                     |
| <b>Cord Length</b>         | 6.6 ft. (2.0 m)                  |

When QUALITY & SERVICE COUNT – Choose Makita

makita.ca